



WILDCAT PRINTS

January | February 2012

A Note From Your PTA President...

Can you believe the first semester of the 2011-2012 school year is almost over? Me either!! The WCE PTA has been hard at work supporting the Wildcat students, teachers & families. Here are some of the highlights:



- o **Academic Mini-Grants:**
PTA funds were used to purchase classroom enhancements such as Promethean Activues and iPads.
- o **Fall Carnival:**
Over 250 volunteers worked together to offer a wholesome and fun evening of family entertainment. Thanks to the parents, teachers and administrators who worked with the PTA to solve the carnival parking issue and make it easier for everyone attending.
- o **Scholastic Book Fair**
A battalion of volunteers organized the book fair for students and their families. The book fair greatly benefits the media center as it can use their "Scholastic" credit to add books to the shelves for our eager readers!
- o **Storybook Night:**
How fun to see all the performances in one place! Thanks to our wonderful and talented teachers and staff for supporting and helping to implement a new format for Story Book Night so that all the children could see all the skits! They loved it!
- o **Science Force:**
Have you ever seen your kids so excited about science? The kids had a blast this semester with hands on experiments in the "science lab" - a tremendous thank you to our parent volunteers, we couldn't offer this wonderful program without your help.

The WCE PTA is honored to represent a school so fortunate to have so many parent volunteers throughout the year. Without your help, we could not offer such exceptional programs and events. Thank you to all who have spent your time and efforts enriching your children's elementary education! If you have not had a chance to join the PTA or volunteer, it is never too late. Please check our website for details, or talk to your child's teacher: www.wilsoncreekpta.org/index.html

Happy Holidays!

Amy Price
Wilson Creek Elementary PTA President | abprice@bellsouth.net



JANUARY 2012

- 04 Teacher Workday - **No School**
- 05 School Begins
- 16 Martin Luther King, Jr. Day
School Holiday - **No School**
- 17 PTA Meeting (9:30 a.m.)
- 20 Bingo Night

FEBRUARY 2012

- 03 & 10 Donuts with Dad
- 13 - 17 Staff Appreciation Week
- 14 PTA Meeting (9:30 a.m.)
- 16 Teacher & Staff
Appreciation Luncheon
- 17 & 20 School Holiday - **No School**



PTA MEMBERSHIP

IT'S NOT TOO LATE TO JOIN THE WILSON CREEK PTA!

2011-12 Membership Forms are available from...

- Wilson Creek ES front office
- Wilson Creek PTA website www.wilsoncreekpta.org/ptaforms
- Maria Vaughan, VP-Membership GAVaughans@bellsouth.net

2011-12 Membership Levels are:

- Wildcat Protector \$250
- Wildcat Guardian \$120
- Wildcat Friend \$85
- Wildcat \$50
- Cub \$10

Have Questions or Comments?
Need More Information?

Contact The PTA TODAY!

Maria Vaughan
VP of Membership

GAVaughans@bellsouth.net
678.542.2121

DID YOU KNOW?

- That learning math has never been easier? Thanks to our PTA, every student at Wilson Creek has access to an endless supply of extra iXL math help and homework.
- That your child loves to shout... "BINGO?!" It doesn't get any better than those five letters that bring instant joy! Your PTA is proud to sponsor one of the favorite family nights of the year, Bingo Night!
- That the PTA is honored to help those in need. Thank you Wilson Creek families for all your donations through the holidays and always!

Check out www.wilsoncreekpta.org for more information and sign up TODAY!

WAYS AND MEANS

KEEP SENDING IN YOUR BOX TOPS!



The monthly classroom contests continue as we work our way to our goal of \$2000 and an end of year party! In the first two months of school we have already earned over \$500! The money earned this year will help pay for technology in the classroom.

Information on where to find Box Tops on everyday products and more can be found at www.boxtops4education.com.

Questions/comments?

Carol Zollmann
carol.zollmann@gmail.com



EARN MONEY WITH GEORGIA NATURAL GAS!



It's not too late to register Wilson Creek as your school with Georgia Natural Gas! With the TrueBlue Schools program from GNG, Wilson Creek can earn money just for our families being customers.

To find out how, simply visit:

trueblueschools.com and register to start earning! It's easy and it adds up fast!

Questions/comments?

Carol Zollmann
carol.zollmann@gmail.com

COMMUNITY SERVICES



SINGLE STREAM RECYCLING

In November, we were thrilled to begin single stream recycling at our school in every classroom. In addition to paper, plastic, aluminum and cardboard can now be recycled, like you would at home. There is no sorting involved. This was made possible by working with our new business partner, Advanced Disposal, who provided all the bins and they pick up our items weekly for free. We appreciate everyone's support in reducing, reusing and recycling at Wilson Creek!

SHOES FOR THE CURE

We have permission to keep two of the recycling shoe bins out all year. Please find them in the atrium outside the cafeteria. Any shoe, regardless of condition, may be recycled. We will run another concentrated shoe drive for **two weeks in March**.

CLEAN AIR

This past fall, we conducted another clean air audit of the afternoon carpool line. We improved only slightly over last year's results. This year, 54% of the cars were idling, compared to 58% last fall. Please note – Wilson Creek is a no-idling zone and we all need to turn off our engines while waiting in line. **Vehicle exhaust is harmful to everyone, especially children**, who breathe more and at a faster rate than adults. Turning off your car while waiting creates healthier air for our children, teachers and parents. Also, idling wastes money. If your car is idling for more than 30 seconds, it is more fuel efficient to turn off the engine. Thanks for your support.

GREEN TEAM CHAIR NEEDED FOR NEXT YEAR

Please contact **Jennifer Braynard** if you are interested in taking over this fun role next year! She can be reached at **770-476-0730** or braynards@bellsouth.net.

Go Green! Wilson Creek Wildcats are Respectful About Recycling!

FAMILY EVENTS

MARK YOUR CALENDARS!

January 20
Bingo Night

February 3 & 10
Donuts with Dads

March 23
Artist Day

April 20
Movie Night

Please contact with your questions:

Sara Bryan
sarabryan@ymail.com



ADVERTISING

ADVERTISING RATES

Business Card Size Only:
\$5 Per Newsletter

Wildcat Prints is published online
four times a year.

For more information, contact:
Tejal Patel at tejalga@gmail.com

The Wilson Creek ES PTA and Wilson Creek ES
does not endorse nor guarantee any products or
services advertised in the PTA Newsletter.



THE PTA BOARD OPEN POSITIONS

The following committees are in need of
your help! Contact the board member
listed to volunteer.

PTA Executive Board

VP Ways and Means

Contact **Amy Price:**
abprice@bellsouth.net

Committee Chairs

Academic Services

Grant Writing Chair

Contact **Josephine Ramesh:**
josephine10980@gmail.com

Membership

Nominations

Contact **Maria Vaughan:**
GAVaughans@bellsouth.net

PTA EXECUTIVE BOARD

President

Amy Price
abprice@bellsouth.net

Treasurer

Joni Murphy
joni.murphy@bellsouth.net

Recording Secretary

Lisa Lampel
lm.lampel@yahoo.com

Corresponding Secretary

Sunny Lim
tomatosy@msn.com

Parliamentarian

Debbi Sapp
Debisapp4@gmail.com

VP Academic Services

Josephine Ramesh
josephine10980@gmail.com

VP's Community Services

Stacey Pluemer
Stacey@pluemer.com

Leah Charette
blakeandalyssa@aol.com

VP Communications

Tejal Patel
tejalga@gmail.com

VP Family Events

Sara Bryan
sarabryan@ymail.com

VP Student Services

Carol Zollmann
carol.zollmann@gmail.com

VP Membership

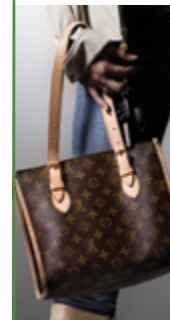
Maria Vaughan
GAVaughans@bellsouth.net

VP Ways and Means

Open

WANTED

Your gently pre-owned
authentic designer handbags
from:



Tory Burch
Chanel
Gucci
Dior
Louis Vuitton
Fendi
Jimmy Choo
Prada

And other high-end
designers...

Ruth's Reselling Remedy

Ruth Hartman

678.628.3951 or 678.245.4355

ruthgator@comcast.net